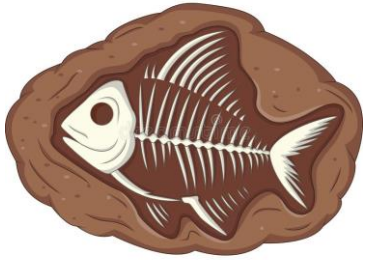


Evolution and Inheritance

UPPER SCHOOL

Fossil



Any remains or impression of a living thing from a previous age e.g. skeleton, footprint.

Palaeontologist



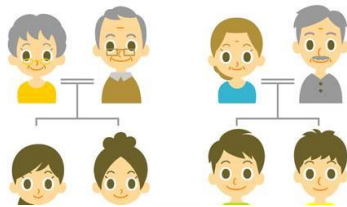
Scientists that study the life that existed in previous ages by studying fossils.

Offspring

The children of any species created by a male and female. We are the offspring of our parents!

Ancestors

A person older than us which we are related to. This could be our grandparents, great grandparents etc. People who feature in our family trees.

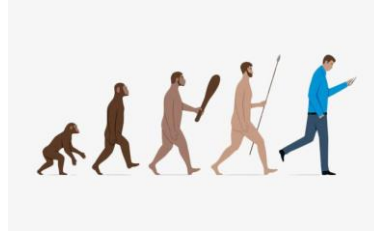


Adaptation



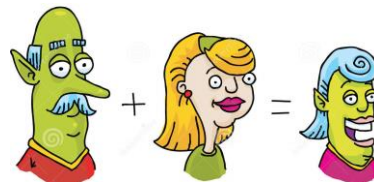
A change in the behaviour or bodies of a species over time which helps it to survive in the environment.

Evolution



A change in the genetics of a species over time. It usually happens from generation to generation.

Inheritance



The genetic characteristics that we get from our parents.

Environment

The conditions that a certain species lives in. This could be physical things such as the area we live in or social things such as the food we eat or the things we do.

Extinction

A species that no longer exists and has died out.

Genetics



A part of us that we get from our parents and that control the characteristics we will inherit. We might look like our parents because of this. You might have heard of it called DNA.

Characteristic

The characteristics of a person or thing are the qualities or features that belong to them and make them recognisable.

Variation

Differences that living things have. They pass these on to their offspring and they help them to survive.

Survival

Being able to continue to live and exist in difficult situations or circumstances. The need to survive can lead to species having to adapt.

Evolution and Inheritance

UPPER SCHOOL

Fossil



Any remains or impression of a living thing from a previous age e.g. skeleton, footprint.

Palaeontologist



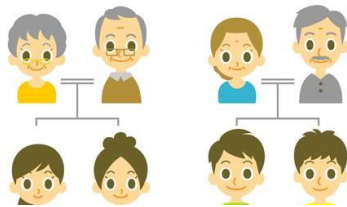
Scientists that study the life that existed in previous ages by studying fossils.

Offspring

The children of any species created by a male and female. We are the offspring of our parents!

Ancestors

A person older than us which we are related to. This could be our grandparents, great grandparents etc. People who feature in our family trees.

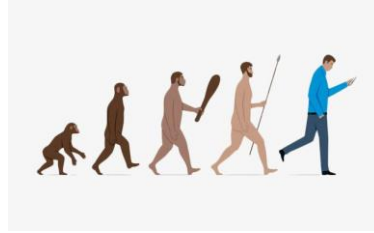


Adaptation



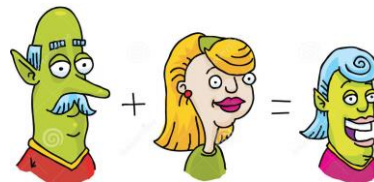
A change in the behaviour or bodies of a species over time which helps it to survive in the environment.

Evolution



A change in the genetics of a species over time. It usually happens from generation to generation.

Inheritance



The genetic characteristics that we get from our parents.

Environment

The conditions that a certain species lives in. This could be physical things such as the area we live in or social things such as the food we eat or the things we do.

Extinction

A species that no longer exists and has died out.

Genetics



A part of us that we get from our parents and that control the characteristics we will inherit. We might look like our parents because of this. You might have heard of it called DNA.

Characteristic

The characteristics of a person or thing are the qualities or features that belong to them and make them recognisable.

Variation

Differences that living things have. They pass these on to their offspring and they help them to survive.

Survival

Being able to continue to live and exist in difficult situations or circumstances. The need to survive can lead to species having to adapt.